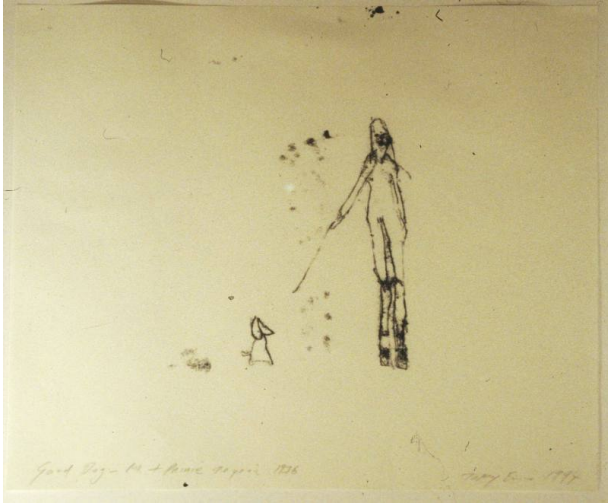


Basic Detail Report



Good Dog - Me and Prince, 1976

Date

1994

Primary Maker

Tracey Emin

Medium

Monoprint

Description

Tracey Emin draws upon her own personal experiences to create works that express powerful, visceral emotions concerning sexuality, mortality and the creation of meaning. These works are amongst a number of early prints in which the artist represents details from her childhood, the characteristic intense, spidery lines possess a child-like immediacy that befits the apparently innocent subjects. Monoprinting forms a significant part of Emin's practice, in which a unique print is created in mirror image to the original drawing. The reflective quality of the process relates to the self-reflexive nature of Emin's autobiographical practice, in which the details of her life are recorded with an unrelenting honesty. Shown as part of the exhibition Tracey Emin: I need Art like I need God, 1997. (South London Gallery)

Dimensions

Frame Size: 600 x 500 mm (23 5/8 x 19 11/16 in.) Object/Work: 490 x 580 mm