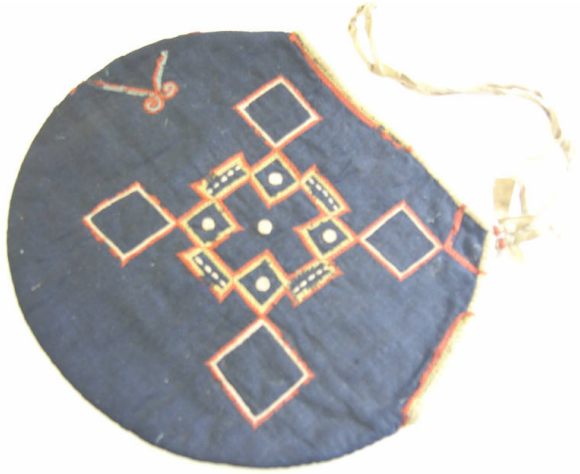


Basic Detail Report



Hat

Date

1800-1902

Medium

Cotton

Description

Hat of dark blue cotton. It has a flat, rounded top, and angled opening, from which are strung two tapes. It is decorated with white, red and yellow chain stitch

embroidery in a cross design, embellished with squares, dashes, and dots. It is lined with light coloured heavy cotton cloth.

Dimensions

Object/Work: 260 x 240 mm