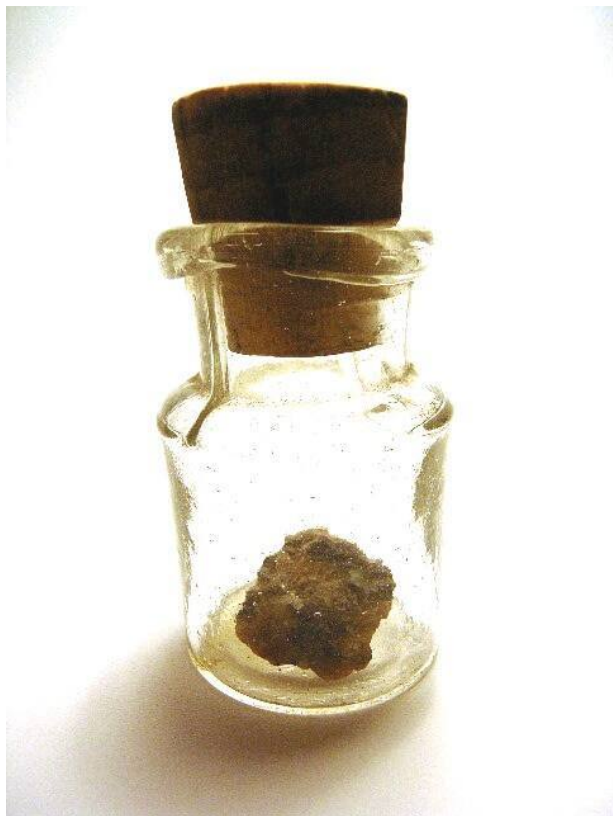


Basic Detail Report



Statue

Date

1279-1213 BC

Medium

Porphyrite, glass, cork

Description

Fragment of a statue of Ramases II painted pink, white, black and yellow, in a glass bottle with a stopper. Brought from the ruins of the Ramesseum, the mortuary temple of Ramesses II in Thebes.

Dimensions

Object/Work: 20 mm