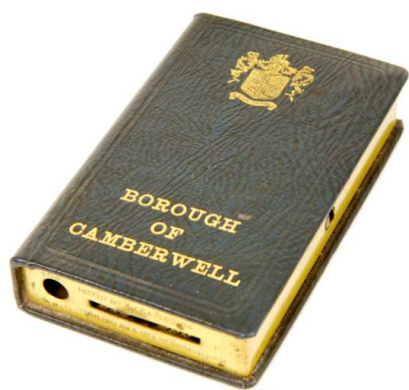


# Basic Detail Report

---



## Collecting-Box

**Date**

1800-1992

**Medium**

Brass, leather

**Description**

Collection box for Camberwell rates. Locked brass box

bound with leather resembling a book. Stamped with "Borough of Camberwell" and a coat of arms on the top.

**Dimensions**

Object/Work: 116 x 175 x 22 mm